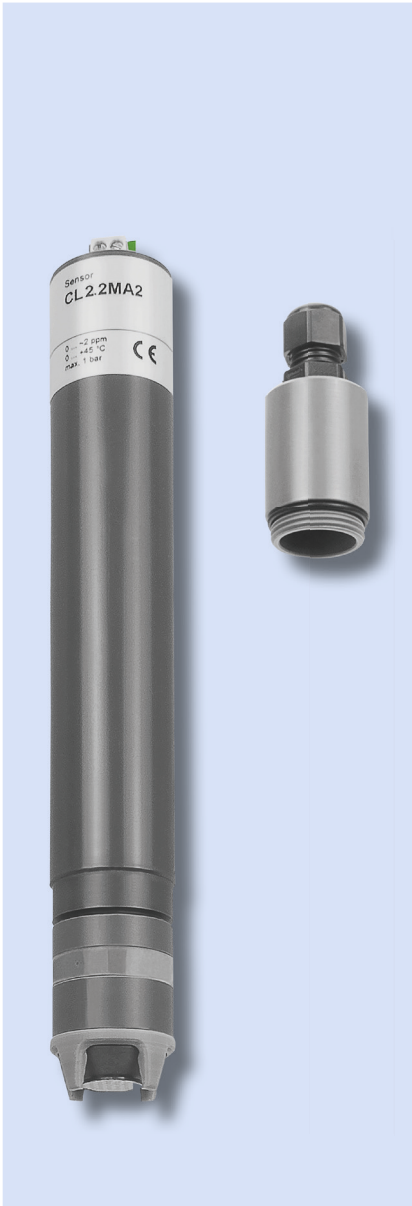


1.1.1.

DOSASens Chlorine sensor CL2.2



Chlorine sensor with membrane-covered, amperometric 2-electrode system. For the measurement of free inorganic chlorine at constant pH.

Product description:

- Measurand(s): NaClO (sodium hypochlorite), Ca(ClO)₂ (calciumhypochlorite), Cl₂ (chlorine gas), chlorine generated by membrane electrolysis
- Calibration: at the controller, via analytical chlorine determination by DPD-1 method
- Interferences:
 - ClO₂ is being registered with factor 9 of its measured value
 - O₃ is registered
 - with membrane-less chlorine electrolysis interferences may occur
- Resolution: 0.001, 0.01 ppm (depends on type)
- pH range: 6–8
- Pressure range:
 - Operation without circlip: 0 ... 0.5 bar, no pressure surges and/or vibrations
 - Operation with circlip: 0 ... 1.0 bar, no pressure surges and/or vibrations
- Temperature range: 0–45 °C (no ice crystals in the measuring water)
- Integrated automatic temperature compensation (avoid temperature jumps!)
- Absence of the disinfectant: max. 24 h
- Response time: T₉₀ ca. 30 sec
- Flow rate: approx. 15–30 l/h, low flow-dependence
- Shaft length: standard 190 mm, and up to 220 mm in length (mA-Version)
- Connection: 5-pin M12 screwed plug (mV-, mA-version), 2-pole terminal (mA-Version)
- Material: PVC-U and semipermeable membrane

Areas of application:

- Salt or Seawater from a concentration of > 3.5 to about 26% salinity, free of surfactants and with constant pH.

Scope of supply:

- DOSASens CL2.2 sensor, membrane cap, electrolyte, operating instructions

Ordering data:

Type:	Measuring range: ppm	Resolution: ppm	Output signal:	Power supply:	Item number:
CL2.2N-M12	0.05–20.00	0.01	0 to -2000 mV, 1 kΩ	±5 to ±15 VDC, 10 mA 12 ... 30 VDC R _L = 50 ... 900 Ω	3626000
CL2.2MA2-M12	0,005 ... 2,00	0,001	4 ... 20 mA		3326008
CL2.2MA20-M12	0,05 ... 20,00	0,01			3326009
CL2.2MA2	0,005 ... 2,00	0,001			3326032
CL2.2MA20	0,05 ... 20,00	0,01			3326013

Additional technical data:

Type:	Slope:	Connection:	Special characteristics:
CL2.2N-M12	-100 mV/ppm	5-pin M12 screwed plug	-
CL2.2MA2-M12	8,0 mA/ppm		Connection only to a controller with galvanically separated power supply.
CL2.2MA20-M12	0,8 mA/ppm		
CL2.2MA2	8,0 mA/ppm	2-pin terminal	
CL2.2MA20	0,8 mA/ppm		

Spare parts:

Spare parts:	for sensor type:	Item number:
Membrane cap M20.2	CL2.2 all types	9026001
Electrolyte ECL2.1	CL2.2 100 ml, all types	9026058

Accessories:

Type:	for sensor type:	Item number:
Sensor simulator pH, Redox, Cl	all sensors with mV signal	21131100
Sensor simulator SIM11.1n	0 mV, -100 mV, -1000mV	9026205
Sensor simulator 4 – 20 mA, current sensor	all sensors with mA signal	90249000
mV Simulator and mA Tester	all sensors with mV signal or mA signal	21131105
Photometer for calibration	chlorine, total chlorine, isocyanuric, pH	90231000