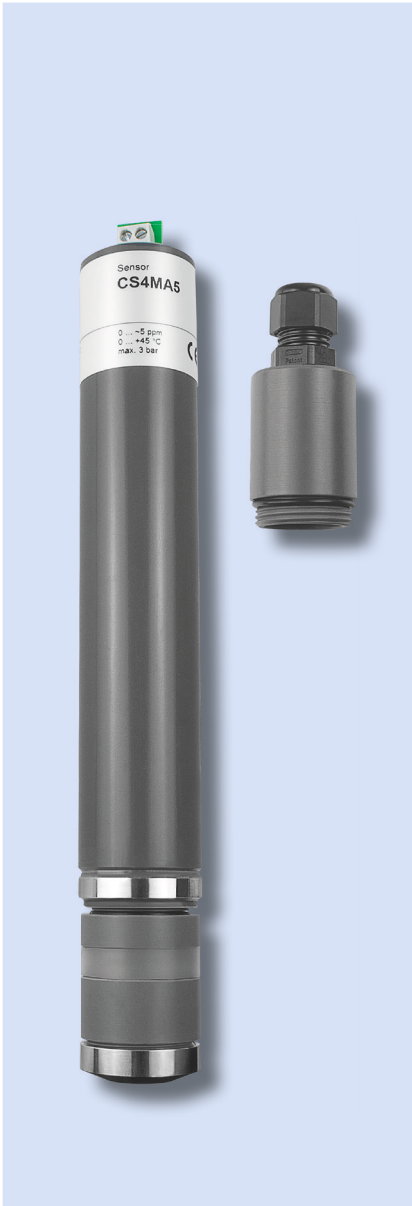


1.1.1.

DOSASens Chlorine sensor CS4-...-SW



Chlorine sensor with membrane-covered, amperometric 3-electrode system. For the measurement of free inorganic chlorine with reduced pH-dependence in sea water.

Product description:

- Measurand(s): NaClO (sodium hypochlorite), Ca(OCl)₂ (calcium hypochlorite), Cl₂ (chlorine gas), electrolytically generated chlorine
- Calibration: at the controller, via analytical chlorine determination by DPD-1 method
- Interferences:
 - 75 % of ClO₂-concentration
 - 80 % of O₃-concentration
 - combined chlorine may increase the measuring value
- pH range: 4–9
- Pressure range:
 - Operation without circlip: 0–0.5 bar, no pressure surges and/or vibrations
 - Operation with circlip: 0–3.0 bar, no pressure surges and/or vibrations
- Temperature range: 0–45 °C
- Integrated automatic temperature compensation
- Response time: T₉₀ approx. 2 min.
- Absence of the disinfectant: max. 24 h
- Flow rate: approx. 15–30 l/h, low flow-dependence
- Shaft length: standard 190 mm, and up to 220 mm in length (mA-Version)
- Connection: 5-pin M12 screwed plug (mV-, mA-, Modbus RTU-version), 2-pole terminal (mA-Version)
- Material: PVC-U, PEEK, stainless steel 1.4571, microporous hydrophilic membrane

Areas of application:

- Sea water at 10 µS/cm to 50 mS/cm, surfactants are partially tolerated.

Scope of supply:

- DOSASens CS4-...-SW sensor, membrane cap, electrolyte, operating manual

Ordering data:

Type:	Measuring range: ppm	Resolution: ppm	Output signal:	Power supply:	Item number:
CS4H-SW-M12	0.005–2.00	0.001	0 to -2000 mV 1 kΩ	±5 to ±15 VDC 10 mA	3626060
CS4N-SW-M12	0.05–20.00	0.01			3626061
CS4L-SW-M12	0.50–200.0	0.1			3626062
CS4H-An-SW-M12	0.005–2.00	0.001		9–30 VDC 20–56 mA	3626070
CS4N-An-SW-M12	0.05–20.00	0.01			3626071
CS4L-An-SW-M12	0.50–200.0	0.1			3626072
CS4H-M0c-SW	0.005–2.00	0.001	ModBus RTU	3426960	
CS4N-M0c-SW	0.05–20.00	0.01		3426961	
CS4L-M0c-SW	0.50–200.0	0.1		3426962	

Ordering data:

Type:	Measuring range: ppm	Resolution: ppm	Output signal:	Power supply:	Item number:
CS4MA2-SW	0.01 – 2.00	0.01	4–20 mA	12 – 30 V DC R _L = 50–900 Ω	3426903
CS4MA5-SW	0.01 – 5.00	0.01			3426904
CS4MA10-SW	0.01 – 10.00	0.01			3426905
CS4MA20-SW	0.01 – 20.00	0.01			3426906
CS4MA200-SW	0.50 – 200.0	0.10			3426907
CS4MA2-M12-SW	0.01 – 2.00	0.01			3426913
CS4MA5-M12-SW	0.01 – 5.00	0.01			3426914
CS4MA10-M12-SW	0.01 – 10.00	0.01			3426915
CS4MA20-M12-SW	0.01 – 20.00	0.01			3426916
CS4MA200-M12-SW	0.50 – 200.0	0.10			3426917

Additional technical data:

Type:	Slope:	Connection:	Special characteristics:	
CS4H-SW-M12	-1000 mV/ppm	5-pin M12 screwed plug	Connection only to a controller with galvanically separated power supply.	
CS4N-SW-M12	-100 mV/ppm			
CS4L-SW-M12	-10 mV/ppm			
CS4H-An-SW-M12	-1000 mV/ppm			
CS4N-An-SW-M12	-100 mV/ppm			
CS4L-An-SW-M12	-10 mV/ppm			
CS4H-M1c-SW	Modbus RTU	2-pole terminal	Connection only to a controller with galvanically separated power supply.	
CS4N-M1c-SW				
CS4L-M1c-SW				
CS4MA2-SW	8.0 mA/ppm			
CS4MA5-SW	3.2 mA/ppm			
CS4MA10-SW	1.6 mA/ppm			
CS4MA20-SW	0.8 mA/ppm			
CS4MA200-SW	0.08 mA/ppm			
CS4MA2-M12-SW	8.0 mA/ppm			5-pin M12 screwed plug
CS4MA5-M12-SW	3.2 mA/ppm			
CS4MA10-M12-SW	1.6 mA/ppm			
CS4MA20-M12-SW	0.8 mA/ppm			
CS4MA200-M12-SW	0.08 mA/ppm			

Spare parts:

Spare parts:	For sensor type:	Item number:
Membrane cap M48.4S	CS4 all types, for use in sea water	9026026
Electrolyte ECS2.1	CS4 all types	9026060

Accessories:

Type:	For sensor type:	Item number:
Sensor simulator pH, Redox, Cl	all sensors with mV signal	21131100
Sensor simulator SIM11.1n	0 mV, -100 mV, -1000mV	9026205
Sensor simulator 4 – 20 mA, current sensor	all sensors with mA signal	90249000
mV Simulator and mA Tester	all sensors with mV signal or mA signal	21131105
Photometer for calibration	chlorine, total chlorine, isocyanuric, pH	90231000