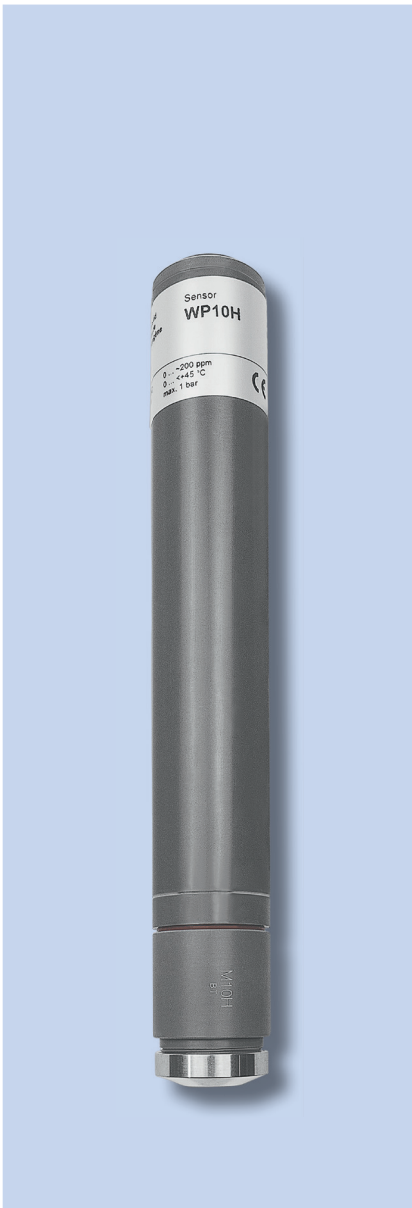


1.1.1.

**DOSASens Hydrogen peroxide sensor WP10**

Sensor for the measurement of hydrogen peroxide – especially for high concentrations. Membrane-covered, amperometric 2-electrode system. The membrane system is mechanically robust. The membrane system is largely tensile resistant.



**Product description:**

- Measurand(s): hydrogen peroxide
- Calibration:
  - DIN 38409-15 "Determination of hydrogen peroxide"
  - ISO/DIS 7157 "Determination of hydrogen peroxide – titrimetric method"
- Interferences:
  - Cl<sub>2</sub> must not be existent
  - PES must not be existent
  - O<sub>3</sub> must not be existent
  - Sulfide must not be existent
- Phenoles aquaous solution >3 % must not be existent
- pH range: 2–11
- Pressure range:
  - Operation without circlip: 0–0.5 bar, no pressure surges and/or vibrations
  - Operation with circlip: 0–1.0 bar, no pressure surges and/or vibrations
- Temperature range: 5–45 °C
- Integrated automatic temperature compensation
- Response time: T<sub>90</sub> approx. 8 min
- Absence of the disinfectant: max. 24 h
- Flow rate: approx. 15–30 l/h, low flow-dependence,
- Shaft length: standard 175 mm, and up to 220 mm in length (mA-Version)
- Connection: 5-pin M12 screwed plug (mV-, mA-, Modbus RTU-version), 2-pole terminal (mA-Version)
- Material: PVC-U, stainless steel 1.4571

**Areas of application:**

- All types of water treatment, also sea water, surfactants are tolerated to the greatest possible extent.

**Scope of supply:**

- DOSASens WP10 sensor, membrane cap, electrolyte, operating manual

**Ordering data:**

Type:	Measuring range: ppm	Resolution: ppm	Output signal:	Power supply:	Item number:
WP10H-M12	0,5 ... 200	0,1 ppm	0 to -2000 mV 1 kΩ	±5 to ±15 V DC 10 mA	3626320
WP10N-M12	5 ... 2000	1 ppm			3626321
WP10L-M12	0,005 ... 20000	0,001 % (10 ppm)			3626322
WP10-20%-M12	0,05 ... 200000	0,01 % (100 ppm)			3626323
WP10H-An-M12	0,5 ... 200	0,1 ppm	0 to -2000 mV (max -2500 mV) 1 kΩ	9–30 V DC 20–56 mA	3626330
WP10N-An-M12	5 ... 2000	1 ppm			3626331
WP10L-An-M12	0,005 ... 2 % (20000 ppm)	0,001 % (10 ppm)			3626332
WP10-20%-An	0,05 ... 20 % (200000 ppm)	0,01 % (100 ppm)			3626333
WP10H-M0c	0,5 ... 200	0,1	Modbus RTU		3326350
WP10N-M0c	5 ... 2000	1			3326353
WP10L-M0c	0,005 ... 2 % (20000 ppm)	0,001 % (10 ppm)			3326351
WP10-20%-M0c	0,05 ... 20 % (200000 ppm)	0,01 % (100 ppm)			3326352

Subject to technical modifications and printing errors. Images may vary slightly from actual product.  
02.05.2022

## Ordering data:

Type:	Measuring range: ppm	Resolution: ppm	Output signal:	Power supply:	Item number:
WP10MA-200	0,5 ... 200	0,1	4–20 mA	12–30 VDC R <sub>L</sub> = 50 to 900 Ω	3326313
WP10MA-2000	5 ... 2000	1			3326314
WP10MA-2%	0,005 ... 2 % (20000 ppm)	0,001 % (10 ppm)			3326310
WP10MA-5%	0,05 ... 5 % (50000 ppm)	0,01 % (100 ppm)			3326311
WP10MA-10%	0,05 ... 10 % (100000 ppm)	0,01 % (100 ppm)			3326312
WP10MA-200-M12	0,5 ... 200	0,1			3326323
WP10MA-2000-M12	5 ... 2000	1			3326324
WP10MA-2%-M12	0,005 ... 2 % (20000 ppm)	0,001 % (10 ppm)			3326320
WP10MA-5%-M12	0,05 ... 5 % (50000 ppm)	0,01 % (100 ppm)			3326321
WP10MA-10%-M12	0,05 ... 10 % (100000 ppm)	0,01 % (100 ppm)			3326322

## Additional technical data:

Type:	Slope:	Cable Connection:	Special characteristics:			
WP10H-M12	-10 mV/ppm	5-pin M12 screwed plug	Connection only to a controller with galvanically separated power supply.			
WP10N-M12	-1 mV/ppm					
WP10L-M12	-1000 mV/% (-0.1 mV/ppm)					
WP10-10-20%-M12	-100 mV/% (-0.01 mV/ppm)					
WP10H-An-M12	-10 mV/ppm					
WP10N-An-M12	-1 mV/ppm					
WP10L-An-M12	-1000 mV/% (-0.1 mV/ppm)					
WP10-20%-An-M12	-100 mV/% (-0.01 mV/ppm)					
WP10H-M0c	Modbus RTU			2-pole terminal	Connection only to a controller with galvanically separated power supply.	
WP10N-M0c						
WP10L-M0c						
WP10-20%-M0c						
WP10MA-200	2-pole terminal	2-pole terminal	Connection only to a controller with galvanically separated power supply.			
WP10MA-2000						
WP10MA-2%						
WP10MA-5%						
WP10MA-10%						
WP10MA-200-M12	M12 female	5-pin M12 screwed plug				Connection only to a controller with galvanically separated power supply.
WP10MA-2000-M12						
WP10MA-2%-M12						
WP10MA-5%-M12						
WP10MA-10%-M12						

## Spare parts:

Spare parts:	for sensor type:	Item number:
Membrane cap <b>M10.1H + G</b>	WP10H, WP10N, WP10MA-200, WP10MA2000 (all)	9026018
Membrane cap <b>M10.1D + G</b>	WP10L, WP10-20%, WP10MA-2%, WP10MA-5%, WP10MA-10%, WP10MA-20%; (all)	9026015
Electrolyte <b>EWP7/W</b>	WP10 all types	9026062

## Accessories:

Type:	for sensor type:	Item number:
<b>Sensor simulator pH, Redox, Cl</b>	all sensors with mV signal	21131100
<b>Sensor simulator SIM11.1n</b>	0 mV, -100 mV, -1000mV	9026205
<b>Sensor simulator 4 – 20 mA, current sensor</b>	all sensors with mA signal	90249000
<b>mV Simulator and mA Tester</b>	all sensors with mV signal or mA signal	21131105
<b>Photometer</b> for calibration	chlorine, total chlorine, isocyanuric, pH, hydrogen peroxide	90231040