

## DOSA*Sens* Peracetic acid sensor P10.1

Sensor for the measurement of peracetic acid – surfactants and lead acids are tolerated. Peracetic acid sensor with membrane-covered, amperometric 2-electrode system. The membrane system is mechanically robust. The membrane system is largely tensile resistant.

### Product description:

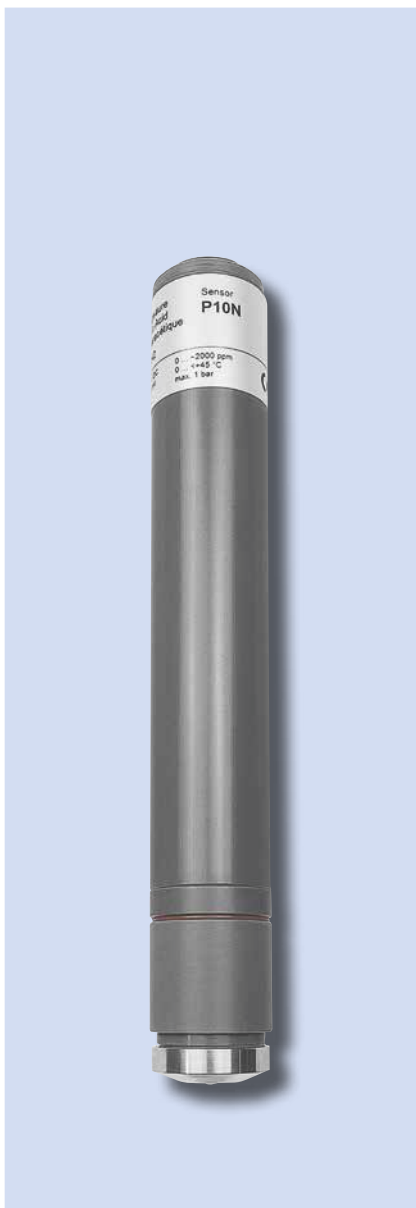
- Measurand(s): Peracetic acid
- Calibration of the controller: on the measuring device, using analytical determination
- Interferences:
  - ClO<sub>2</sub> increases the measured value
  - H<sub>2</sub>O<sub>2</sub> very low influence on the measuring value
  - O<sub>3</sub> increases the measured value strongly
- pH-range: 1 ... 8
- Pressure range:
  - Operation without retaining ring: 0 ... 0,5 bar, no pressure impulses and/or vibrations
  - Operation with retaining ring: 0 ... 1,0 bar, no pressure impulses and/or vibrations
- Temperature range: 0 ... 45 °C
- Sensor with temperature compensation
- Response time: T<sub>90</sub> ca. 3,5 min. at +10 °C  
T<sub>90</sub> ca. 1,5 min. at +45 °C
- Absence of the disinfectant: max. 24 h
- Flow rate: ca. 15 ... 30 l/h, small flow rate dependence is given
- Sensor length: Standard 190 mm, up to 220 mm (in mA-Version)
- Conexion: 5-pole M12 screwed plug (mV-, mA-, Modbus RTU-Version), 2-pole terminals(mA-Version)
- Material: PVC-U, stainless steel 1.4571

### Areas of application:

- Fresh water, all types of water treatment (e.g. CIP-plant, rinsers)
- Lead acids: up to 1% sulfur, saltpetre and phosphoric acid have no influence on the measuring results.
- Surfactants are tolerated.

### Scope of supply:

- DOSA*Sens* P10.1 Sensor, membrane cap, electrolyte, operating manual



### Ordering data:

Type:	Measuring range: ppm	Resolution: ppm	Output signal:	Power supply:	Item number:
P10.1-20-M12	0...20	0,01	0...-2000 mV 1 k Ω	± 5 - ± 15 VDC 10 mA	3526100
P10.1H-M12	0...200	0,1			3526101
P10.1N-M12	5...2000	1			3526102
P10.1L-M12	0,005...2 % (20000 ppm)	0,001 % (10 ppm)			3526103
P10.1-20-An-M12	0...20	0,01	0...-2000 mV (max. -2,5 V)	9-30 VDC ca. 20 - 56 mA	3526110
P10.1H-An-M12	0...200	0,1			3526111
P10.1N-An-M12	5...2000	1			3526112
P10.1L-An-M12	0,005...2 % (20000 ppm)	0,001 % (10 ppm)			3526113
P10.1-20-M0c	0...20	0,01	ModBus RTU		3526120
P10.1H-M0c	0...200	0,1			3526121
P10.1N-M0c	5...2000	1			3526122
P10.1L-M0c	0,005...2 % (20000 ppm)	0,001 % (10 ppm)			3526123

**Ordering data:**

Type:	Measuring range: ppm	Resolution: ppm	Output signal:	Power supply:	Item number:
P10.1MA20	0...20	0,01	4 ... 20 mA	12 ... 30 VDC R <sub>i</sub> = 50 Ω (12 V) ... R <sub>i</sub> 900 Ω (30 V)	3526130
P10.1MA-200	0 ... 200	0,1			3526131
P10.1MA-2000	5 ... 2000	1			3526132
P10.1MA-5000	50...5000	1			3526133
P10.1MA-2%	0 ... 2 % (20000 ppm)	0,001 % (10 ppm)			3526134
P10.1MA-5%	0 ... 5 % (50000 ppm)	0,01 % (100 ppm)			3526135
P10.1MA20-M12	0...20	0,01			3526140
P10.1MA-200-M12	0 ... 200	0,1			3526141
P10.1MA-2000-M12	0 ... 2000	1			3526142
P10.1MA-5000-M12	50...5000	1			3526143
P10.1MA-2%-M12	0 ... 2 % (20000 ppm)	0,001 % (10 ppm)			3526144
P10.1MA-5%-M12	0 ... 5 % (50000 ppm)	0,01 % (100 ppm)			3526145

**Additional technical data:**

Type:	Slope:	Cable Connection:	Special characteristics:				
P10.1-20-M12	-100 mV/ppm	5-pin M12 screwed plug	Connection only to a controller with galvanically separated power supply				
P10.1H-M12	-10 mV/ppm						
P10.1N-M12	-1 mV/ppm						
P10.1L-M12	-100 mV/% (-0,1 mV/ppm)						
P10.1-20-An-M12	-100 mV/ppm						
P10.1H-An-M12	-10 mV/ppm						
P10.1N-An-M12	-1 mV/ppm						
P10.1L-An-M12	-100 mV/% (-0,1 mV/ppm)						
P10.1-20-M0c	Modbus RTU			2 pole terminal	Connection only to a controller with galvanically separated power supply		
P10.1H-M0c							
P10.1N-M0c							
P10.1L-M0c							
P10.1MA20	0,8 mA/ppm					5-pin M12 screwed plug	Connection only to a controller with galvanically separated power supply
P10.1MA-200	0,08 mA/ppm						
P10.1MA-2000	0,008 mA/ppm						
P10.1MA-5000	0,0032 mA/ppm						
P10.1MA-2%	8,0 mA/% (0,0008 mA/ppm)						
P10.1MA-5%	3,2 mA/% (0,00032 mA/ppm)						
P10.1MA20-M12	0,8 mA/ppm						
P10.1MA-200-M12	0,08 mA/ppm						
P10.1MA-2000-M12	0,008 mA/ppm						
P10.1MA-5000-M12	0,0032 mA/ppm						
P10.1MA-2%-M12	8,0 mA/% (0,0008 mA/ppm)						
P10.1MA-5%-M12	3,2 mA/% (0,00032 mA/ppm)						

**Spare parts:**

Spare parts:	for sensors type:	Item number
Membrane cap M10.3N	all P10.1Types	9026028
Electrolyte EPS9H/W	P10.1 not P10.1L, p10.1MA 2% and P10.1MA-5%	9026071
Electrolyte EPS9L/W	P10.1L, p10.1MA 2% und P10.1MA-5%	9026072
Emery S2	All P10.1 Sensors	9026104
O-Ring 20 x 1,5 Silicone	All P10.1 Sensors	9026153

**Accessories:**

Type:	for sensor type:	Item number:
Sensor simulator SIM11.1n	0 mV, -100 mV, -1000mV	9026205
mV Simulator and mA Tester	all sensors with mV signal or mA signal	21131105