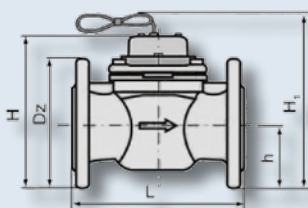


## DOSA *Tec* Woltmann contact water meter WW

Die cast iron, lacquer coated inside and outside, with plastic inner parts



### Product description:

- Woltmann contact water meter
- Dry-dial water meter with dry metering chamber
- Operating temperature range:
  - Cold water up to 30 °C
  - Warm water up to 130 °C
- Wide measuring range
- Removable measuring insert
- Simple readout
- Magnetic coupling
- Low minimum start-up flow rate
- Materials suitable for drinking water
- Complies with ISO 4064, BS 5728, ISO/DIS 10385
- Max. operating pressure: 16 bar

### Areas of application:

- Registration of flow rates
- Pulse to controller (for dosing control)

### Scope of supply:

- DOSA *Tec* WW Woltmann contact water meter, standard 2 m connection cable, BNC plug (standard), without plug
- Please specify litres/pulse sequence and plug type when ordering

### Ordering data:

Type:	Connection diameter:	Nominal flow:	Max. flow rate:	Item number:
WWKT contact water meter for cold water up to 30 °C	DN	m <sup>3</sup> /h	m <sup>3</sup> /h	
<b>WWKT 50, 2" flange</b>	50	50	90	43113050
<b>WWKT 65, 2 ½" flange</b>	65	60	120	43113051
<b>WWKT 80, 3" flange</b>	80	120	200	43113052
<b>WWKT 100, 4" flange</b>	100	230	300	43113053
<b>WWKT 150, 6" flange</b>	150	400	600	43113054
<b>WWKT 200, 8" flange</b>	200	750	1000	43113055
Type:	Connection diameter:	Nominal flow:	Max. flow rate:	Item number:
WWHT dry-dial meter for hot water up to 130 °C	DN	m <sup>3</sup> /h	m <sup>3</sup> /h	
<b>WWHT 50 2" flange</b>	50	15	30	43113060
<b>WWHT 65 2 ½" flange</b>	65	25	60	43113061
<b>WWHT 80 3" flange</b>	80	45	90	43113062
<b>WWHT 100 4" flange</b>	100	70	70	43113063
<b>WWHT 150 6" flange</b>	150	150	300	43113064
<b>WWHT 200 8" flange</b>	200	250	500	43113065

**Additional technical data:**

WWKT contact water meter up to 30 °C (dry-dial water meter)

Conne- tion type:	Nominal flow rate	Max. flow rate:	Min. flow rate:	Transitional flow rate:	Minimum inflow:	Totalizer:	Litres per: pulse	Installed length: „L“	InstalledHeight: „H“	Flange dia- meter „D <sub>2</sub> “:	Weight:
DN	m <sup>3</sup> /h	m <sup>3</sup> /h	m <sup>3</sup> /h	m <sup>3</sup> /h	m <sup>3</sup> /h	max./m <sup>3</sup>	l/pulse	mm	mm	mm	kg
50	50	90	0.35	0.9	0.15	106	2.5, 5, 10, 25, 50, 100, 250, 500, 1000	200	187	165	9.9
65	60	120	0.45	1.2	0.20			200	197	185	10.6
80	120	200	0.50	0.8	0.25			225	219	200	13.3
100	230	300	1.50	1.8	0.25			250	229	220	15.6
150	400	600	1.80	4.0	1.00	107		300	357	285	40.1
200	750	1000	4.00	6.0	1.50			350	387	340	51.1

**Additional technical data:**

WWHT contact water meter up to 130 °C (dry-dial water meter)

Conne- tion type:	Nominal flow rate	Max. flow rate:	Min. flow rate:	Transitional flow rate:	Minimum inflow:	Totalizer:	Litres per: pulse	Installed length: „L“	InstalledHeight: „H“	Flange dia- meter „D <sub>2</sub> “:	Weight:
DN	m <sup>3</sup> /h	m <sup>3</sup> /h	m <sup>3</sup> /h	m <sup>3</sup> /h	m <sup>3</sup> /h	max./m <sup>3</sup>	l/pulse	mm	mm	mm	kg
50	15	30	0.6	1.5	0.25	106	2.5, 5, 10, 25, 50, 100, 250, 500, 1000	200	187	165	9.9
65	25	60	0.8	2.0	0.30			200	197	185	10.6
80	45	90	1.4	3.2	0.35			225	219	200	13.3
100	70	70	3.5	4.8	0.60			250	229	220	15.6
150	150	300	5.5	12.0	2.00	107		300	357	285	40.1
200	250	500	10.0	20.0	4.00			350	387	340	51.1